

**INFORME ISO 18091 – 2014**

**2.6.3. SUBINDICADOR OPERATIVIDAD DEL SISTEMA INTEGRADO DE TRANSPORTE**

**PÚBLICO**

**LOCALIDAD DE ENGATIVÁ**

**TRANSMILENIO S.A.**

**VIGENCIA 2025**

**1. Cobertura de Rutas Engativá**

Las rutas del Sistema Integrado de Transporte Público – SITP que transitan por la localidad de Engativá son presentadas a continuación en la Tabla 1 y en la Figura 1.

Tabla 1. Rutas zonales que transitan por la Localidad de Engativá.

| <b>RUTA</b> | <b>DENOMINACIÓN</b>          | <b>TIPO RUTA</b> | <b>LOCALIDAD ORIGEN</b> | <b>LOCALIDAD DESTINO</b> |
|-------------|------------------------------|------------------|-------------------------|--------------------------|
| 1-1         | Álamos                       | Alimentador      | Engativá                | Engativá                 |
| 1-2         | Garces Navas                 | Alimentador      | Engativá                | Engativá                 |
| 1-3         | Villas De Granada            | Alimentador      | Engativá                | Engativá                 |
| 1-4         | Cortijo                      | Alimentador      | Engativá                | Engativá                 |
| 1-5         | Colsubsidio                  | Alimentador      | Engativá                | Engativá                 |
| 1-6         | Bolivia Oriental             | Alimentador      | Engativá                | Engativá                 |
| 1-7         | Quiriguá                     | Alimentador      | Engativá                | Engativá                 |
| 1-8         | Calle 80                     | Alimentador      | Engativá                | Engativá                 |
| 1-9         | Villas Del Dorado            | Alimentador      | Engativá                | Engativá                 |
| 1-10        | Bolivia Bochica II           | Alimentador      | Engativá                | Engativá                 |
| 16-1        | Tierra Grata                 | Alimentador      | Engativá                | Engativá                 |
| 16-2        | Engativá Centro              | Alimentador      | Engativá                | Engativá                 |
| 16-3        | Av. Eldorado - Álamos        | Alimentador      | Engativá                | Engativá                 |
| 16-4        | El Muelle                    | Alimentador      | Engativá                | Engativá                 |
| 16-5        | Villa Amalia                 | Alimentador      | Engativá                | Engativá                 |
| 16-6        | La Faena                     | Alimentador      | Engativá                | Engativá                 |
| 16-14       | Aeropuerto                   | Alimentador      | Engativá                | Engativá                 |
| 12          | San Pablo - Porciúncula      | Urbana           | Engativá                | Chapinero                |
| 60          | Bachué/ - Zarazota           | Urbana           | Engativá                | Rafael Uribe             |
| 94          | Bosa San Diego - Suba Corpas | Urbana           | Bosa                    | Suba                     |

| <b>RUTA</b> | <b>DENOMINACIÓN</b>                          | <b>TIPO RUTA</b> | <b>LOCALIDAD ORIGEN</b> | <b>LOCALIDAD DESTINO</b> |
|-------------|--|------------------|-------------------------|--------------------------|
| DA218       | Villa Gladys - Centro                        | Urbana           | Engativá                | Santa Fe                 |
| 142         | Engativá - Centro                            | Urbana           | Engativá                | Santa Fe                 |
| 260         | Arabia - Unicentro                           | Urbana           | Ciudad Bolívar          | Usaquén                  |
| 271         | Lomas - Gran Granada                         | Urbana           | Engativá                | Usme                     |
| 291         | Terminal Norte Makro - Tierra Buena          | Urbana           | Kennedy                 | Usaquén                  |
| 330         | El Uval - La Estrellita                      | Urbana           | Usme                    | Usaquén                  |
| 359         | Zn. In Álamos - Germania                     | Urbana           | Engativá                | Neutra                   |
| 367         | Porciúncula - San Bernardino                 | Urbana           | Bosa                    | Neutra                   |
| 402         | Auto Norte Est. Terminal - Sabana Del Dorado | Urbana           | Engativá                | Usaquén                  |
| 442         | Mirandela - Villa Gladys                     | Urbana           | Suba Oriental           | Engativá                 |
| 466         | Sabana Del Dorado - Chico Norte              | Urbana           | Engativá                | Neutra                   |
| 539         | El Uval - Engativá Centro                    | Urbana           | Usme                    | Engativá                 |
| 576         | Bosa Santa Fe - Engativá                     | Urbana           | Kennedy                 | Engativá                 |
| 577         | El Palmar - Diana Turbay                     | Urbana           | Usme                    | Engativá                 |
| 621         | Bachué - Santo Domingo                       | Urbana           | Calle 80                | Perdomo                  |
| 634         | Bosa San Diego - Calle 153                   | Urbana           | Bosa                    | Usaquén                  |
| 661         | Terminal Norte - Península                   | Urbana           | Usaquén                 | San Cristóbal            |
| 669         | Gran Granada - Galán                         | Urbana           | Calle 80                | Tintal Zona Franca       |
| 740         | Península - Engativá                         | Urbana           | San Cristóbal           | Engativá                 |
| 806         | Providencia Alta - Sabana Del Dorado         | Urbana           | Usme                    | Engativá                 |
| 927         | Bosa San José - Aeropuerto                   | Urbana           | Bosa                    | Fontibón                 |
| 5-1         | Suba Rincón                                  | Urbana           | Engativá                | Suba Centro              |
| 5-2         | Carrera 91                                   | Urbana           | Engativá                | Suba Centro              |
| 5-3         | Serena Cerezos                               | Urbana           | Engativá                | Calle 80                 |
| 5-4         | Florida                                      | Urbana           | Engativá                | Engativá                 |
| 193B        | Bachué - Marly                               | Urbana           | Engativá                | Neutra                   |
| DB237       | Engativá - Unicentro                         | Urbana           | Engativá                | Usaquén                  |
| 59B         | Bachué - Chapinero                           | Urbana           | Engativá                | Chapinero                |
| 607A        | San Bernardino - Pontevedra                  | Urbana           | Bosa                    | Suba                     |
| 742A        | Paraíso - Bulevar Niza                       | Urbana           | Ciudad Bolívar          | Suba                     |
| BD906       | Villa Gladys - Toberín                       | Urbana           | Engativá                | Usaquén                  |
| BD909       | Mazurén - Villas De Granada                  | Urbana           | Engativá                | Suba                     |
| BF918       | Terminal Norte - Patio Bonito                | Urbana           | Usaquén                 | Kennedy                  |
| BG902       | Metrovivienda - Calle 222                    | Urbana           | Suba                    | Kennedy                  |
| BK903       | San Cristóbal Norte - Aeropuerto             | Urbana           | Usaquén                 | Fontibón                 |
| BK904       | La Estrellita - Terminal Salitre             | Urbana           | Usaquén                 | Fontibón                 |

R-DA-005 septiembre de 2024

**TRANSMILENIO S.A.**

Avenida Calle 26 # 69-76  
Edificio Elemento - Torre 1 Piso 5  
Código postal: 111071  
Teléfono: (601) 2203000  
Información: línea (601) 4824304  
[www.transmilenio.gov.co](http://www.transmilenio.gov.co)



**25**  
**AÑOS**  
TRANSMILENIO S.A.



ALCALDÍA MAYOR  
DE BOGOTÁ D.C.

| <b>RUTA</b> | <b>DENOMINACIÓN</b>              | <b>TIPO RUTA</b> | <b>LOCALIDAD ORIGEN</b> | <b>LOCALIDAD DESTINO</b> |
|-------------|----------------------------------|------------------|-------------------------|--------------------------|
| BK905       | La Estrellita - Hayuelos         | Urbana           | Fontibón                | Usaquén                  |
| BK916       | Balmoral Nte - Fontibón Refugio  | Urbana           | Usaquén                 | Fontibón                 |
| C101        | Providencia - El Palmar          | Urbana           | Engativá                | Usme                     |
| FA427       | La Magdalena - Centro Andino     | Urbana           | Kennedy                 | Chapinero                |
| C25         | Sabana Del Dorado - Unicentro    | Urbana           | Engativá                | Usaquén                  |
| CA124       | Bilbao - Centro                  | Urbana           | Suba                    | Santa Fe                 |
| CA127       | Fontanar Del Rio - Germania      | Urbana           | Suba                    | Santa Fe                 |
| CA129       | Bilbao - Germania                | Urbana           | Suba                    | Neutra                   |
| CA153       | Suba La Gaitana - Centro         | Urbana           | Suba                    | Santa Fe                 |
| CF154       | Suba Nogales - Puente Aranda     | Urbana           | Suba                    | Puente Aranda            |
| CG137       | Suba Corpas - Metrovivienda      | Urbana           | Suba                    | Bosa                     |
| CG147       | Bilbao - Metrovivienda           | Urbana           | Suba                    | Bosa                     |
| CG156       | Bilbao - El Recreo               | Urbana           | Suba                    | Bosa                     |
| CG157       | Suba Corpas - El Recreo          | Urbana           | Suba                    | Bosa                     |
| CH116       | San Carlos - Fontanar Del Rio    | Urbana           | Ciudad Bolívar          | Suba                     |
| CH131       | Bilbao - Diana Turbay            | Urbana           | Suba                    | Usme                     |
| CK102       | Suba Fontanar - Salitre El Greco | Urbana           | Suba                    | Fontibón                 |
| CK122       | Aures II - Zona Industrial       | Urbana           | Suba                    | Puente Aranda            |
| CL149       | Est- Av. 1 De Mayo - Bilbao      | Urbana           | Suba                    | San Cristóbal            |
| CL155       | Suba Gaitana - Gaviotas          | Urbana           | Suba                    | San Cristóbal            |
| DA203       | Bachué - Chico Norte             | Urbana           | Calle 80                | Chapinero                |
| DA213       | Villa Teresita - Galerías        | Urbana           | Engativá                | Barrios Unidos           |
| DA214       | Bachué - Parkway                 | Urbana           | Engativá                | Teusaquillo              |
| DA215       | Bachué - Germania                | Urbana           | Engativá                | Santa Fe                 |
| DB217       | Sabana Del Dorado - Unicentro    | Urbana           | Engativá                | Usaquén                  |
| DD204       | Gran Granada - Portal Calle 80   | Urbana           | Engativá                | Engativá                 |
| DD212       | Engativá Centro - Portal 80      | Urbana           | Engativá                | Engativá                 |
| DG208       | Puente De Guadua - Metrovivienda | Urbana           | Engativá                | Bosa                     |
| DH209       | Villa Teresita - Galicia         | Urbana           | Tunjuelito              | Engativá                 |
| DH216       | La Florida - Villa Mayor         | Urbana           | Engativá                | Tunjuelito               |
| DK206       | Bachué - Gobernación             | Urbana           | Engativá                | Fontibón                 |
| DK211       | Gran Granada - Salitre El Greco  | Urbana           | Engativá                | Fontibón                 |
| DL205       | Bachué - Bosque San Carlos       | Urbana           | Engativá                | Usme                     |
| E16A        | Bosa San José - Colina / Cl 153  | Urbana           | Bosa                    | Suba                     |
| E25         | Engativá Centro - Lourdes        | Urbana           | Engativá                | Chapinero                |
| E44         | Mirandela - El Uval              | Urbana           | Usme                    | Usaquén                  |
| FA410       | Tierra Buena - Chico Norte       | Urbana           | Kennedy                 | Chapinero                |
| FB419       | Nueva Castilla - Lijacá          | Urbana           | Kennedy                 | Usaquén                  |

R-DA-005 septiembre de 2024

**TRANSMILENIO S.A.**

Avenida Calle 26 # 69-76  
Edificio Elemento - Torre 1 Piso 5  
Código postal: 111071  
Teléfono: (601) 2203000  
Información: línea (601) 4824304  
[www.transmilenio.gov.co](http://www.transmilenio.gov.co)



**25**  
**AÑOS**  
TRANSMILENIO S.A.



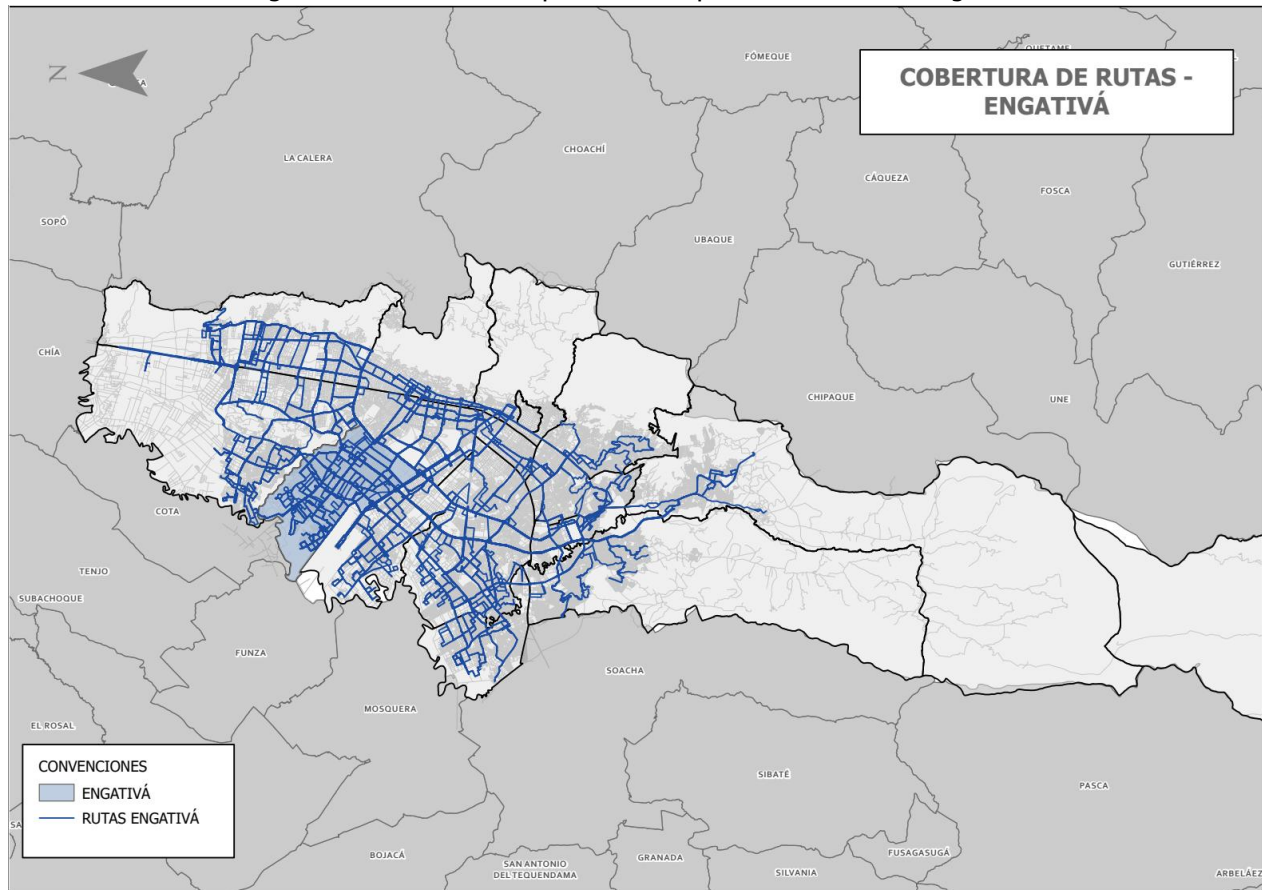
ALCALDÍA MAYOR  
DE BOGOTÁ D.C.

| <b>RUTA</b> | <b>DENOMINACIÓN</b>                     | <b>TIPO RUTA</b> | <b>LOCALIDAD ORIGEN</b> | <b>LOCALIDAD DESTINO</b> |
|-------------|---|------------------|-------------------------|--------------------------|
| FC401       | Tierra Buena - Calle 170                | Urbana           | Kennedy                 | Suba                     |
| FC404       | Patio Bonito - Calle 170                | Urbana           | Kennedy                 | Suba                     |
| GA503       | San Bernardino - Est. Calle 100         | Urbana           | Bosa                    | Suba                     |
| GA518       | Chapinero - Potreritos                  | Urbana           | Bosa                    | Chapinero                |
| GA538       | Villa Del Rio - El Retiro               | Urbana           | Bosa                    | Chapinero                |
| GC509       | Metrovivienda - Corpas                  | Urbana           | Bosa                    | Suba                     |
| GK502       | Villa Del Rio - Aeropuerto              | Urbana           | Bosa                    | Fontibón                 |
| GK542       | Metrovivienda - Estación Modelia        | Urbana           | Kennedy                 | Engativá                 |
| HA606       | San Joaquín - Chico Norte               | Urbana           | Ciudad Bolívar          | Chapinero                |
| HA610       | Paraíso - Chico Norte                   | Urbana           | Ciudad Bolívar          | Usaquén                  |
| HA611       | Est. Calle 100 - Santo Domingo          | Urbana           | Ciudad Bolívar          | Usaquén                  |
| HB609       | Arborizadora Alta - Unicentro           | Urbana           | Ciudad Bolívar          | Usaquén                  |
| HC612       | San Joaquín - Villa María               | Urbana           | Suba                    | Ciudad Bolívar           |
| HC705       | Alfonso López - Est. Suba Calle 100     | Urbana           | Usme                    | Suba                     |
| HD607       | Arborizadora Alta - Morato              | Urbana           | Ciudad Bolívar          | Suba                     |
| HD630       | Arborizadora Alta - Morato              | Urbana           | Ciudad Bolívar          | Suba                     |
| HD717       | Usme Centro - Bonanza                   | Urbana           | Usme                    | Engativá                 |
| HK627       | Alpes - Salitre                         | Urbana           | Ciudad Bolívar          | Engativá                 |
| KA305       | El Recodo - Est. Calle 100              | Urbana           | Fontibón                | Chapinero                |
| KA306       | Zona Franca - Centro Andino             | Urbana           | Fontibón                | Chapinero                |
| KA319       | Fontibón Brisas - Centro Andino         | Urbana           | Fontibón                | Chapinero                |
| KA334       | Fontibón Versalles - La Porciúncula     | Urbana           | Fontibón                | Chapinero                |
| KB303       | HB-Fontibón - Unicentro                 | Urbana           | Fontibón                | Usaquén                  |
| KB309       | San Pablo - Lijaca                      | Urbana           | Fontibón                | Usaquén                  |
| KB314       | Fontibón Refugio - El Codito            | Urbana           | Fontibón                | Usaquén                  |
| KB326       | Puerta De Teja - Unicentro              | Urbana           | Fontibón                | Usaquén                  |
| KC315       | Puente Grande - Suba Lisboa             | Urbana           | Fontibón                | Suba                     |
| KC321       | Fontibón Brisas - Tibabuyes             | Urbana           | Fontibón                | Suba                     |
| KC323       | El Recodo - Suba Compartir              | Urbana           | Fontibón                | Suba                     |
| KH317       | Aeropuerto - C.C. Tunal                 | Urbana           | Ciudad Bolívar          | Fontibón                 |
| LD800       | Gaviotas - Villa Gladys                 | Urbana           | San Cristóbal           | Engativá                 |
| P49         | Villa Gladys - Terminal Norte           | Urbana           | Engativá                | Usaquén                  |
| P500        | Aeropuerto - Centro Andino              | Urbana           | Fontibón                | Chapinero                |
| SE10        | Engativá Centro - Germania              | Urbana           | Engativá                | Chapinero                |
| SE14        | Diana Turbay Cultivos - Engativá Centro | Urbana           | Ciudad Bolívar          | Engativá                 |
| SE6         | La Roca - Villa Gladys                  | Urbana           | San Cristóbal           | Engativá                 |

| RUTA | DENOMINACIÓN                           | TIPO RUTA | LOCALIDAD ORIGEN | LOCALIDAD DESTINO |
|------|--|-----------|------------------|-------------------|
| T21  | Clínica Corpas-Conejera - Cantón Norte | Urbana    | Suba             | Usaquén           |
| T40  | Catalina II - Marly                    | Urbana    | Bosa             | Barrios Unidos    |
| T62  | Metrovivienda - Casablanca             | Urbana    | Bosa             | Suba              |
| Z4B  | Est. Terminal - Terminal Salitre       | Urbana    | Usaquén          | Fontibón          |
| Z8   | Metrovivienda - Toberín                | Urbana    | Usaquén          | Bosa              |

Fuente: TRANSMILENIO S.A.

Figura 1. Rutas Zonales que transitan por la localidad de Engativá



Fuente: TRANSMILENIO S.A.

De acuerdo con lo anterior se comunica que la localidad de Engativá cuenta con ciento treinta y cinco (135) rutas zonales, que pasan ya sea al interior de la localidad o por los límites de esta.

2. **Diseños y estudios implementados para conocer las necesidades y demandas de los usuarios**
3. **Reporte de resultados de los diseños y estudios**

### **Respuesta a preguntas 2 y 3**

TRANSMILENIO S. A. en su calidad de Ente Gestor del Sistema Integrado de Transporte Público de la ciudad de Bogotá, analiza de manera permanente diferentes alternativas para la optimización del sistema en las diferentes localidades de la ciudad, con el objetivo de mejorar los niveles de servicio de las rutas del componente zonal bajo criterios de sostenibilidad financiera, a partir de cambios que se ajusten a las dinámicas de movilidad y necesidades de la ciudad.

En este sentido, dentro del proceso de análisis definido al interior de la entidad, en el cual participan las áreas técnicas, financiera, jurídica y de comunicaciones, se realiza una evaluación integral, con el fin de lograr mejoras operacionales, buscando el beneficio general para los usuarios. En este procedimiento se reciben solicitudes de la comunidad, de los concesionarios, y las propuestas de la entidad, y con base en el comportamiento de las rutas analizado por las áreas operativas de la entidad, se identifican las necesidades de cambio.

A partir de estos estudios se han identificado oportunidades de mejora en diversas rutas que tienen influencia en la localidad de Engativá y que se presentan en el "2. Documento Acciones de mejoramiento".

#### **4. Información de frecuencia de las rutas**

Los intervalos programados de las rutas del Sistema Integrado de Transporte Público – SITP que tienen tránsito por la localidad de Engativá son presentadas a continuación para cada uno de los servicios, en periodo habitual y tipo día hábil, expresado en horas, minutos y segundos para las franjas pico am y pico pm en la siguiente tabla.

Tabla 2. Intervalos programados de las Rutas zonales que transitan por la Localidad de Engativá.

| RUTA  | Denominación                                 | INTERVAL<br>O AM | FRECUENCI<br>A VEH<br>/HORA | INTERVAL<br>O PM | FRECUENCI<br>A VEH<br>/HORA |
|-------|--|------------------|-----------------------------|------------------|-----------------------------|
| 12    | FONTIBÓN S PABLO - PORCIÚNCULA               | 0:11:40          | 5                           | 0:16:42          | 4                           |
| 60    | BACHUÉ - ZARAZOTA                            | 0:07:28          | 8                           | 0:10:33          | 6                           |
| 94    | BOSA SAN DIEGO - SUBA CORPAS                 | 0:08:15          | 7                           | 0:10:48          | 6                           |
| 142   | ENGATIVÁ - CENTRO                            | 0:10:42          | 6                           | 0:14:25          | 4                           |
| 260   | ARABIA - UNICENTRO                           | 0:10:00          | 6                           | 0:13:21          | 4                           |
| 271   | GRAN GRANADA - LOMAS                         | 0:12:43          | 5                           | 0:13:05          | 5                           |
| 291   | TERMINAL NORTE MAKRO - TIERRA BUENA          | 0:11:59          | 5                           | 0:14:53          | 4                           |
| 330   | EL UVAL - LA ESTRELLITA                      | 0:07:08          | 8                           | 0:08:51          | 7                           |
| 359   | ZN. INDUSTRIAL ÁLAMOS - GERMANIA             | 0:09:06          | 7                           | 0:13:22          | 4                           |
| 402   | AUTO NORTE EST. TERMINAL - SABANA DEL DORADO | 0:09:32          | 6                           | 0:13:06          | 5                           |
| 442   | MIRANDELA - VILLA GLADYS                     | 0:08:27          | 7                           | 0:11:31          | 5                           |
| 466   | SABANA DEL DORADO - CHICÓ NORTE              | 0:09:23          | 6                           | 0:14:17          | 4                           |
| 539   | ENGATIVÁ CENTRO - EL UVAL                    | 0:09:54          | 6                           | 0:12:51          | 5                           |
| 576   | BOSA SANTA FE - ENGATIVÁ                     | 0:13:27          | 4                           | 0:14:48          | 4                           |
| 577   | EL PALMAR - DIANA TURBAY                     | 0:11:44          | 5                           | 0:14:14          | 4                           |
| 621   | BACHUÉ - SANTO DOMINGO                       | 0:10:16          | 6                           | 0:12:32          | 5                           |
| 634   | BOSA SAN JOSÉ - CALLE 153                    | 0:08:16          | 7                           | 0:12:41          | 5                           |
| 661   | TERMINAL NORTE - PENÍNSULA                   | 0:08:27          | 7                           | 0:10:34          | 6                           |
| 669   | GRAN GRANADA - GALÁN                         | 0:11:20          | 5                           | 0:14:14          | 4                           |
| 740   | PENÍNSULA - ENGATIVÁ                         | 0:06:37          | 9                           | 0:08:16          | 7                           |
| 806   | PROVIDENCIA ALTA - SABANA DEL DORADO         | 0:09:49          | 6                           | 0:12:20          | 5                           |
| 927   | BOSA SAN JOSÉ - AEROPUERTO                   | 0:09:15          | 6                           | 0:11:07          | 5                           |
| 193B  | BACHUÉ - MARLY                               | 0:11:33          | 5                           | 0:18:22          | 3                           |
| 59B   | BACHUÉ - CHAPINERO                           | 0:11:01          | 5                           | 0:14:40          | 4                           |
| 607A  | SAN BERNARDINO - PONTEVEDRA                  | 0:12:32          | 5                           | 0:16:56          | 4                           |
| 742A  | PARAÍSO - BULEVAR NIZA                       | 0:07:49          | 8                           | 0:10:16          | 6                           |
| BD237 | ENGATIVÁ CENTRO - UNICENTRO                  | 0:04:05          | 15                          | 0:06:07          | 10                          |
| BD906 | VILLA GLADYS - TOBERÍN                       | 0:11:44          | 5                           | 0:16:40          | 4                           |
| BD909 | MAZURÉN - VILLAS DE GRANADA                  | 0:12:58          | 5                           | 0:16:56          | 4                           |
| BF918 | TERMINAL NORTE - PATIO BONITO                | 0:13:23          | 4                           | 0:14:49          | 4                           |
| BG902 | METROVIVIENDA - CALLE 222                    | 0:12:30          | 5                           | 0:13:13          | 5                           |
| BK903 | VERBENAL - AEROPUERTO                        | 0:14:33          | 4                           | 0:17:21          | 3                           |
| BK904 | LA ESTRELLITA - SALITRE EL GRECO             | 0:15:27          | 4                           | 0:21:22          | 3                           |
| BK905 | SERREZUELA - PUENTE AÉREO                    | 0:13:32          | 4                           | 0:16:04          | 4                           |

| RUTA  | Denominación                      | INTERVALO AM | FRECUENCIA A VEH /HORA | INTERVALO PM | FRECUENCIA A VEH /HORA |
|-------|-----------------------------------|--------------|------------------------|--------------|------------------------|
| BK916 | BALMORAL NORTE - FONTIBÓN REFUGIO | 0:11:31      | 5                      | 0:15:19      | 4                      |
| C101  | PROVIDENCIA - EL PALMAR           | 0:11:26      | 5                      | 0:14:41      | 4                      |
| C25   | SABANA DEL DORADO - UNICENTRO     | 0:07:35      | 8                      | 0:11:00      | 5                      |
| CA124 | CENTRO - BILBAO                   | 0:07:56      | 8                      | 0:12:16      | 5                      |
| CA127 | FONTANAR DEL RÍO - GERMANIA       | 0:08:58      | 7                      | 0:08:43      | 7                      |
| CA129 | BILBAO - GERMANIA                 | 0:07:19      | 8                      | 0:09:57      | 6                      |
| CA153 | SUBA LA GAITANA - CENTRO          | 0:10:27      | 6                      | 0:13:13      | 5                      |
| CF154 | SUBA NOGALES - PUENTE ARANDA      | 0:15:32      | 4                      | 0:13:35      | 4                      |
| CG137 | SUBA CORPAS - METROVIVIENDA       | 0:09:22      | 6                      | 0:12:28      | 5                      |
| CG147 | BILBAO - METROVIVIENDA            | 0:07:17      | 8                      | 0:08:37      | 7                      |
| CG156 | EL RECREO - BILBAO                | 0:13:22      | 4                      | 0:17:56      | 3                      |
| CG157 | EL RECREO - SUBA CORPAS           | 0:10:29      | 6                      | 0:11:29      | 5                      |
| CH116 | SAN CARLOS - FONTANAR DEL RIO     | 0:10:59      | 5                      | 0:13:56      | 4                      |
| CH131 | BILBAO - DIANA TURBAY             | 0:09:06      | 7                      | 0:11:41      | 5                      |
| CK102 | SUBA FONTANAR - SALITRE GRECO     | 0:11:45      | 5                      | 0:14:52      | 4                      |
| CK122 | VILLA CINDY - CLÍNICA COLOMBIA    | 0:11:32      | 5                      | 0:16:20      | 4                      |
| CL149 | BILBAO - EST. AV. 1 DE MAYO       | 0:09:38      | 6                      | 0:11:39      | 5                      |
| CL155 | SUBA GAITANA - GAVIOTAS           | 0:11:10      | 5                      | 0:14:09      | 4                      |
| DA203 | BACHUÉ - CHICÓ NORTE              | 0:11:52      | 5                      | 0:16:30      | 4                      |
| DA213 | VILLA TERESITA - GALERÍAS         | 0:14:37      | 4                      | 0:18:35      | 3                      |
| DA214 | BACHUÉ - RICAURTE                 | 0:12:56      | 5                      | 0:16:41      | 4                      |
| DA215 | BACHUÉ - GERMANIA                 | 0:08:39      | 7                      | 0:11:21      | 5                      |
| DB217 | UNICENTRO - SABANA DEL DORADO     | 0:06:22      | 9                      | 0:09:22      | 6                      |
| DD204 | GRAN GRANADA - PORTAL CALLE 80    | 0:09:37      | 6                      | 0:09:50      | 6                      |
| DD212 | ENGATIVÁ CENTRO - PORTAL 80       | 0:21:53      | 3                      | 0:28:23      | 2                      |
| DG208 | PUENTE DE GUADUA - METROVIVIENDA  | 0:09:36      | 6                      | 0:10:30      | 6                      |
| DH209 | VILLA TERESITA - GALICIA          | 0:08:03      | 7                      | 0:09:19      | 6                      |
| DH216 | LA FLORIDA - VILLA MAYOR          | 0:07:27      | 8                      | 0:11:03      | 5                      |
| DK206 | BACHUÉ - GOBERNACIÓN              | 0:11:14      | 5                      | 0:12:39      | 5                      |
| DK211 | GRAN GRANADA - SALITRE EL GRECO   | 0:10:55      | 5                      | 0:12:56      | 5                      |
| DL205 | BOSQUE SAN CARLOS - BACHUÉ        | 0:10:33      | 6                      | 0:14:29      | 4                      |
| E16A  | BOSA SAN JOSÉ - COLINA/CL153      | 0:07:44      | 8                      | 0:09:44      | 6                      |
| E25   | ENGATIVÁ CENTRO - LOURDES         | 0:08:00      | 8                      | 0:11:31      | 5                      |
| E44   | MIRANDELA - EL UVAL               | 0:10:34      | 6                      | 0:11:26      | 5                      |
| FA410 | TIERRA BUENA - CHICÓ NORTE        | 0:07:22      | 8                      | 0:09:51      | 6                      |
| FB419 | LIJACÁ- NUEVA CASTILLA            | 0:09:28      | 6                      | 0:09:52      | 6                      |
| FC401 | TIERRA BUENA - CALLE 170          | 0:10:03      | 6                      | 0:10:40      | 6                      |

R-DA-005 septiembre de 2024

**TRANSMILENIO S.A.**

Avenida Calle 26 # 69-76  
Edificio Elemento - Torre 1 Piso 5  
Código postal: 111071  
Teléfono: (601) 2203000  
Información: línea (601) 4824304  
[www.transmilenio.gov.co](http://www.transmilenio.gov.co)



**25**  
**AÑOS**  
TRANSMILENIO S.A.



| RUTA  | Denominación                            | INTERVALO AM | FRECUENCIA A VEH /HORA | INTERVALO PM | FRECUENCIA A VEH /HORA |
|-------|---|--------------|------------------------|--------------|------------------------|
| FC404 | PATIO BONITO - CALLE 170                | 0:13:32      | 4                      | 0:14:59      | 4                      |
| GA518 | POTRERITOS - CHAPINERO                  | 0:10:37      | 6                      | 0:13:27      | 4                      |
| GA538 | BOITA - EL RETIRO                       | 0:09:33      | 6                      | 0:13:39      | 4                      |
| GC509 | METROVIVIENDA - CORPAS                  | 0:07:39      | 8                      | 0:08:42      | 7                      |
| GK502 | VILLA DEL RÍO - AEROPUERTO              | 0:13:58      | 4                      | 0:17:09      | 4                      |
| GK542 | EST. MODELIA - METROVIVIENDA            | 0:10:51      | 6                      | 0:12:43      | 5                      |
| HA606 | SAN JOAQUÍN - CHICÓ NORTE               | 0:07:17      | 8                      | 0:11:03      | 5                      |
| HA610 | PARAÍSO - CHICÓ NORTE                   | 0:08:39      | 7                      | 0:12:00      | 5                      |
| HA611 | SANTO DOMINGO - EST. CALLE 100          | 0:09:27      | 6                      | 0:14:16      | 4                      |
| HB609 | ARBORIZADORA ALTA - UNICENTRO           | 0:11:52      | 5                      | 0:15:25      | 4                      |
| HC612 | SAN JOAQUÍN - VILLA MARÍA               | 0:08:58      | 7                      | 0:11:01      | 5                      |
| HC705 | ALFONSO LÓPEZ - SUBA CALLE 100          | 0:08:23      | 7                      | 0:11:55      | 5                      |
| HD607 | ARBORIZADORA ALTA - MORATO              | 0:09:02      | 7                      | 0:12:09      | 5                      |
| HD630 | ARBORIZADORA ALTA - MORATO              | 0:07:45      | 8                      | 0:11:37      | 5                      |
| HD717 | USME CENTRO - BONANZA                   | 0:06:21      | 9                      | 0:08:33      | 7                      |
| HK627 | ALPES - SALITRE                         | 0:11:19      | 5                      | 0:15:48      | 4                      |
| KA305 | EL RECODO – EST. CALLE 100              | 0:09:39      | 6                      | 0:11:25      | 5                      |
| KA306 | ZONA FRANCA - CENTRO ANDINO             | 0:07:59      | 8                      | 0:13:15      | 5                      |
| KA319 | FONTIBÓN BRISAS - CENTRO ANDINO         | 0:07:12      | 8                      | 0:10:39      | 6                      |
| KA334 | FONTIBÓN VERSALLES - CENTRO FINANCIERO  | 0:10:00      | 6                      | 0:12:58      | 5                      |
| KB303 | HB-FONTIBÓN - UNICENTRO                 | 0:09:32      | 6                      | 0:11:53      | 5                      |
| KB309 | SAN PABLO - LIJACÁ                      | 0:09:06      | 7                      | 0:13:19      | 5                      |
| KB314 | EL CODITO - FONTIBÓN REFUGIO            | 0:08:47      | 7                      | 0:10:49      | 6                      |
| KB326 | PRADO GRANDE - UNICENTRO                | 0:09:33      | 6                      | 0:14:37      | 4                      |
| KC315 | PUENTE GRANDE - SUBA LISBOA             | 0:09:43      | 6                      | 0:11:45      | 5                      |
| KC321 | FONTIBÓN BRISAS - TIBABUYES             | 0:11:02      | 5                      | 0:12:59      | 5                      |
| KC323 | EL RECODO - SUBA COMPARTIR              | 0:08:07      | 7                      | 0:09:05      | 7                      |
| KH317 | AEROPUERTO - TUNAL                      | 0:09:39      | 6                      | 0:11:48      | 5                      |
| LD800 | GAVIOTAS - VILLA GLADYS                 | 0:12:51      | 5                      | 0:16:51      | 4                      |
| P49   | VILLA GLADYS - TERMINAL NORTE           | 0:06:22      | 9                      | 0:08:02      | 7                      |
| P500  | AEROPUERTO - CENTRO ANDINO              | 0:11:59      | 5                      | 0:17:17      | 3                      |
| SE10  | ENGATIVÁ CENTRO - GERMANIA              | 0:07:08      | 8                      | 0:10:20      | 6                      |
| SE14  | DIANA TURBAY CULTIVOS - ENGATIVÁ CENTRO | 0:08:00      | 7                      | 0:09:08      | 7                      |
| T21   | CLÍNICA CORPAS - CANTÓN NORTE           | 0:07:44      | 8                      | 0:09:33      | 6                      |
| T40   | CATALINA II - MARLY                     | 0:07:59      | 8                      | 0:10:25      | 6                      |
| T62   | METROVIVIENDA - CASABLANCA              | 0:13:13      | 5                      | 0:16:57      | 4                      |

R-DA-005 septiembre de 2024

**TRANSMILENIO S.A.**

Avenida Calle 26 # 69-76  
Edificio Elemento - Torre 1 Piso 5  
Código postal: 111071  
Teléfono: (601) 2203000  
Información: línea (601) 4824304  
[www.transmilenio.gov.co](http://www.transmilenio.gov.co)



**25**  
**AÑOS**  
TRANSMILENIO S.A.



| RUTA | Denominación                     | INTERVAL<br>O AM | FRECUENCI<br>A VEH<br>/HORA | INTERVAL<br>O PM | FRECUENCI<br>A VEH<br>/HORA |
|------|----------------------------------|------------------|-----------------------------|------------------|-----------------------------|
| Z4B  | EST. TERMINAL - TERMINAL SALITRE | 0:15:15          | 4                           | 0:20:00          | 3                           |
| Z8   | TOBERÍN - METROVIVIENDA          | 0:06:19          | 9                           | 0:11:34          | 5                           |

Fuente: TRANSMILENIO S.A.

### Rutas Troncales y Duales:

En la siguiente tabla se presentan los intervalos programados y las localidades de origen y destino (en algunas rutas se tienen dos localidades, dado que el inicio o fin de la ruta está en la mitad de dos localidades), de las rutas troncales y duales.

| Nombre Ruta         | Parada Inicio       | Franja     |                       |           |                      |          |                    |           |                      |                          | Localidad Origen         | Localidad Destino |
|---------------------|---------------------|------------|-----------------------|-----------|----------------------|----------|--------------------|-----------|----------------------|--------------------------|--------------------------|-------------------|
|                     |                     | 1 Nocturno | 2 Transición Nocturno | 3 Pico AM | 4 Transición Pico AM | 5 Valle  | 6 Transición Valle | 7 Pico PM | 8 Transición Pico PM | 9 Pre- Nocturno          |                          |                   |
| G45 San Mateo       | Portal Sur          |            | 00:10:21              | 00:08:56  |                      |          | 00:10:00           | 00:10:27  | 00:12:15             | Bosa                     | Soacha                   |                   |
| G45 Portal Sur      | San Mateo           |            | 00:09:14              | 00:08:15  |                      |          | 00:16:26           | 00:17:00  | 00:15:00             | Soacha                   | Bosa                     |                   |
| H54 Portal Usme     | Portal Eldorado     |            | 00:05:34              | 00:06:44  |                      |          | 00:04:21           | 00:06:38  | 00:09:25             | Engativa-Fontibon        | Usme                     |                   |
| K54 Portal Eldorado | Portal Usme         |            | 00:04:15              | 00:04:45  |                      | 00:06:30 | 00:07:00           | 00:08:11  | 00:10:08             | Usme                     | Engativa-Fontibon        |                   |
| C15 Portal Suba     | Portal Tunal        | 00:04:38   | 00:03:52              | 00:05:02  |                      | 00:05:30 | 00:04:20           | 00:05:56  | 00:07:34             | Tunjuelito               | Suba                     |                   |
| H15 Portal Tunal    | Portal Suba         | 00:04:38   | 00:03:20              | 00:04:09  |                      | 00:05:23 | 00:03:22           | 00:05:49  | 00:07:36             | Suba                     | Tunjuelito               |                   |
| M47 M. Nacional     | Portal Sur          | 00:05:00   | 00:03:38              | 00:03:48  |                      | 00:06:16 | 00:05:10           | 00:08:00  | 00:07:39             | Bosa                     | Santa Fe                 |                   |
| G47 P. Sur          | Museo Nacional      | 00:09:00   | 00:08:35              | 00:08:35  |                      | 00:07:14 | 00:05:40           | 00:04:17  | 00:06:14             | Santa Fe                 | Bosa                     |                   |
| G12 P. Sur          | Portal Norte        | 00:02:45   | 00:03:21              | 00:04:10  |                      | 00:04:30 | 00:03:53           | 00:04:04  | 00:06:15             | Usaquen-Suba             | Bosa                     |                   |
| B12 P Norte         | Portal Sur          | 00:03:36   | 00:03:07              | 00:03:49  |                      | 00:04:30 | 00:03:48           | 00:06:25  | 00:07:20             | Bosa                     | Usaquen-Suba             |                   |
| 2 Museo Nacional    | Portal 20 de Julio  | 00:07:43   | 00:04:19              | 00:04:19  |                      | 00:06:01 | 00:06:02           | 00:06:28  | 00:06:22             | San Cristobal            | Santa Fe                 |                   |
| 2 P. 20 de julio    | Museo Nacional      | 00:07:00   | 00:07:00              | 00:07:00  |                      | 00:06:05 | 00:05:58           | 00:04:53  | 00:06:22             | Santa Fe                 | San Cristobal            |                   |
| B27 P. Norte        | Portal Tunal        | 00:05:00   | 00:03:24              | 00:04:23  |                      | 00:05:00 | 00:05:00           | 00:07:40  |                      | Tunjuelito               | Usaquen-Suba             |                   |
| H27 P. Tunal        | Portal Norte        |            | 00:05:00              | 00:05:51  |                      | 00:06:15 | 00:04:34           | 00:05:07  |                      | Usaquen-Suba             | Tunjuelito               |                   |
| A52 Flores          | Portal Sur          | 00:05:00   | 00:03:45              | 00:04:42  |                      |          |                    |           |                      | Bosa                     | Chapinero-Barrios Unidos |                   |
| G52 Portal sur      | Flores              |            |                       |           |                      |          | 00:04:30           | 00:05:40  |                      | Chapinero-Barrios Unidos | Bosa                     |                   |
| 7 Polo              | Portal Suba         | 00:05:00   | 00:05:06              | 00:05:21  |                      | 00:05:26 | 00:05:37           | 00:05:23  | 00:06:00             | Suba                     | Barrios Unidos           |                   |
| 7 Portal Suba       | Polo                | 00:05:00   | 00:05:00              | 00:04:51  |                      | 00:05:45 | 00:05:33           | 00:05:28  | 00:07:40             | Barrios Unidos           | Suba                     |                   |
| K16 P. Eldorado     | Terminal            | 00:03:30   | 00:03:37              | 00:04:47  |                      | 00:06:21 | 00:06:09           | 00:06:35  | 00:07:39             | Usaquen-Suba             | Engativa-Fontibon        |                   |
| B16 Terminal        | Portal Eldorado     |            | 00:05:17              | 00:05:21  |                      | 00:06:30 | 00:05:04           | 00:05:37  | 00:07:43             | Engativa-Fontibon        | Usaquen-Suba             |                   |
| 8 Guatoque          | Terminal            | 00:04:00   | 00:04:00              | 00:04:26  |                      | 00:06:09 | 00:05:15           | 00:05:50  | 00:05:55             | Los Martires             | Los Martires             |                   |
| 8 Terminal          | Guatoque - Veraguas | 00:05:00   | 00:04:40              | 00:04:39  |                      | 00:06:03 | 00:05:07           | 00:05:43  | 00:06:02             | Los Martires             | Los Martires             |                   |
| F23 Américas        | Águas               | 00:07:00   | 00:07:00              | 00:07:00  |                      | 00:04:18 | 00:03:39           | 00:04:20  | 00:05:58             | Santa Fe                 | Kennedy                  |                   |
| J23 Aguas           | Portal Américas     | 00:04:42   | 00:03:33              | 00:04:00  |                      | 00:04:36 | 00:04:00           | 00:05:56  | 00:06:43             | Kennedy                  | Santa Fe                 |                   |
| B10 Portal Norte    | Portal 80           | 00:05:52   | 00:03:37              | 00:03:53  |                      | 00:06:33 | 00:07:00           | 00:06:55  | 00:08:45             | Engativa                 | Usaquen-Suba             |                   |
| D10 Portal 80       | Portal Norte        | 00:07:45   | 00:06:10              | 00:05:26  |                      | 00:06:56 | 00:04:48           | 00:05:09  | 00:06:54             | Usaquen-Suba             | Engativa                 |                   |
| C25 Portal Suba     | Portal 20 de Julio  | 00:04:21   | 00:03:08              | 00:03:25  |                      | 00:05:59 | 00:04:40           | 00:06:21  | 00:06:36             | San Cristobal            | Suba                     |                   |
| L25 P. 20 de Julio  | Portal Suba         | 00:04:30   | 00:04:30              | 00:04:30  |                      | 00:06:21 | 00:05:33           | 00:05:58  | 00:08:22             | Suba                     | San Cristobal            |                   |
| B50 Calle 161       | Portal Suba         |            | 00:05:14              | 00:06:30  |                      |          |                    |           |                      | Suba                     | Usaquen-Suba             |                   |
| C50 P. Suba         | Calle 161           |            |                       |           |                      |          |                    | 00:07:35  |                      | Usaquen-Suba             | Suba                     |                   |
| G43 San Mateo       | Portal Eldorado     | 00:04:00   | 00:05:00              | 00:05:21  |                      | 00:04:59 | 00:03:45           | 00:04:20  | 00:07:18             | Engativa-Fontibon        | Soacha                   |                   |
| K43 P. Eldorado     | San Mateo           | 00:03:30   | 00:03:30              | 00:04:19  |                      | 00:05:00 | 00:05:18           | 00:07:32  | 00:09:45             | Soacha                   | Engativa-Fontibon        |                   |
| H13 P. Tunal        | Portal Norte        |            | 00:03:06              | 00:03:37  |                      | 00:04:20 | 00:03:33           | 00:04:35  | 00:05:47             | Usaquen-Suba             | Tunjuelito               |                   |
| B13 P. Norte        | Portal Tunal        | 00:03:15   | 00:03:15              | 00:03:19  |                      | 00:04:05 | 00:03:18           | 00:05:53  | 00:06:09             | Tunjuelito               | Usaquen-Suba             |                   |
| J74 Universidades   | Portal Norte        |            | 00:04:30              | 00:04:30  |                      | 00:05:33 | 00:04:51           | 00:07:21  | 00:06:15             | Usaquen-Suba             | Santa Fe                 |                   |
| B74 P. Norte        | Universidades       |            | 00:06:56              | 00:06:28  |                      | 00:05:42 | 00:03:53           | 00:05:28  | 00:06:15             | Santa Fe                 | Usaquen-Suba             |                   |
| B28 P. Norte        | Portal Américas     | 00:04:31   | 00:04:01              | 00:04:33  |                      | 00:06:27 | 00:06:18           | 00:06:54  | 00:06:54             | Kennedy                  | Usaquen-Suba             |                   |
| F28 P. Américas     | Portal Norte        | 00:06:53   | 00:06:21              | 00:07:00  |                      | 00:06:34 | 00:04:42           | 00:04:25  | 00:06:25             | Usaquen-Suba             | Kennedy                  |                   |
| L41 Bicentenario    | San Mateo           | 00:04:06   | 00:03:03              | 00:03:26  |                      | 00:05:52 | 00:06:40           | 00:08:00  | 00:08:04             | Soacha                   | Santa Fe                 |                   |
| G41 San Mateo       | Bicentenario        | 00:08:00   | 00:08:00              | 00:08:00  |                      | 00:06:02 | 00:05:48           | 00:04:06  |                      | Santa Fe                 | Soacha                   |                   |
| H72 P. Usme         | Toberín             |            | 00:05:56              | 00:05:19  |                      | 00:04:38 | 00:03:01           | 00:04:52  | 00:07:09             | Usaquen-Suba             | Usme                     |                   |
| B72 Toberín         | Portal Usme         | 00:02:15   | 00:02:19              | 00:03:19  |                      | 00:04:32 | 00:04:26           | 00:07:21  | 00:09:34             | Usme                     | Usaquen-Suba             |                   |
| C19 P. Suba         | Banderas            | 00:06:00   | 00:05:03              | 00:06:00  |                      | 00:06:24 | 00:03:53           | 00:06:46  | 00:10:15             | Kennedy                  | Suba                     |                   |
| F19 Banderas        | Portal Suba         | 00:04:00   | 00:04:00              | 00:05:23  |                      | 00:06:30 | 00:06:30           | 00:06:43  | 00:07:06             | Suba                     | Kennedy                  |                   |
| D55 Portal 80       | Toberín             |            |                       |           |                      | 00:06:45 | 00:05:25           | 00:05:13  |                      | Usaquen-Suba             | Engativa                 |                   |
| B55 Toberín         | Portal 80           | 00:06:45   | 00:03:45              | 00:04:12  |                      |          |                    |           |                      | Engativa                 | Usaquen-Suba             |                   |
| B11 Terminal        | Portal Sur          | 00:05:00   | 00:04:31              | 00:05:26  |                      | 00:05:53 | 00:04:42           | 00:07:06  |                      | Bosa                     | Usaquen-Suba             |                   |
| G11 P. Sur          | Terminal            |            | 00:05:00              | 00:05:00  |                      | 00:05:59 | 00:06:01           | 00:06:52  | 00:07:09             | Usaquen-Suba             | Bosa                     |                   |
| C17 P. Suba         | Portal Usme         | 00:03:15   | 00:03:06              | 00:05:28  |                      | 00:06:21 | 00:05:02           | 00:04:25  |                      | Usme                     | Suba                     |                   |

| Nombre Ruta        | Parada Inicio      | Franja     |                       |           |                      |          |                    |           |                      |                 |          | Localidad Origen | Localidad Destino        |                          |
|--------------------|--------------------|------------|-----------------------|-----------|----------------------|----------|--------------------|-----------|----------------------|-----------------|----------|------------------|--------------------------|--------------------------|
|                    |                    | 1 Nocturno | 2 Transición Nocturno | 3 Pico AM | 4 Transición Pico AM | 5 Valle  | 6 Transición Valle | 7 Pico PM | 8 Transición Pico PM | 9 Pre- Nocturno |          |                  |                          |                          |
| H17 P. Usme        | Portal Suba        | 00:04:23   | 00:03:24              | 00:05:27  | 00:06:04             | 00:04:28 | 00:03:19           | 00:04:00  | 00:06:04             | 00:03:19        | 00:04:00 | 00:06:49         | Suba                     | Usme                     |
| L10 P. 20 de Julio | Portal Eldorado    | 00:07:15   | 00:05:52              | 00:04:55  | 00:06:00             | 00:05:38 | 00:03:53           | 00:05:22  | 00:06:00             | 00:05:38        | 00:05:22 | 00:06:49         | Engatava-Fontibon        | San Cristobal            |
| K10 P. Eldorado    | Portal 20 de Julio | 00:05:26   | 00:03:30              | 00:04:15  | 00:06:00             | 00:05:54 | 00:05:14           | 00:06:20  | 00:06:00             | 00:05:14        | 00:06:20 | 00:07:01         | San Cristobal            | Engatava-Fontibon        |
| D24 P. 80          | Universidades      |            | 00:08:00              | 00:08:00  | 00:06:38             | 00:05:04 | 00:03:35           | 00:05:25  | 00:06:05             | 00:05:04        | 00:05:25 | 00:05:57         | Santa Fe                 | Engatava                 |
| J24 Universidades  | Portal 80          | 00:06:00   | 00:03:29              | 00:03:18  | 00:06:05             | 00:06:00 | 00:06:00           | 00:05:26  | 00:05:51             | 00:04:33        | 00:05:26 | 00:06:45         | Engatava                 | Santa Fe                 |
| D20 Portal 80      | Portal Usme        | 00:04:00   | 00:04:00              | 00:04:00  | 00:05:51             | 00:04:33 | 00:03:38           | 00:05:25  | 00:05:43             | 00:03:58        | 00:05:40 | 00:06:36         | Engatava                 | Usme                     |
| H20 Portal Usme    | Portal 80          | 00:03:15   | 00:02:56              | 00:03:14  | 00:05:43             | 00:03:58 | 00:03:22           | 00:05:40  | 00:07:20             | 00:07:30        | 00:08:16 | 00:10:00         | Kennedy                  | Santa Fe                 |
| M51 Museo Nacional | Portal Américas    | 00:05:08   | 00:03:48              | 00:04:16  | 00:07:20             | 00:07:30 | 00:07:30           | 00:06:16  | 00:07:41             | 00:05:52        | 00:04:59 | 00:07:03         | Santa Fe                 | Kennedy                  |
| F51 P. Américas    | Museo Nacional     | 00:08:00   | 00:08:00              | 00:08:00  | 00:05:42             | 00:05:50 | 00:06:15           | 00:06:15  | 00:05:42             | 00:05:50        | 00:06:15 | 00:06:12         | Tunjuquito               | Teusaquillo              |
| 3 Cerreñas         | Portal Tunal       | 00:06:00   | 00:06:00              | 00:05:32  | 00:05:37             | 00:05:00 | 00:04:56           | 00:05:27  | 00:05:37             | 00:05:00        | 00:05:27 | 00:06:45         | Tunjuquito               | Tunjuquito               |
| D22 Portal 80      | Portal Sur         | 00:04:47   | 00:04:01              | 00:04:49  | 00:06:15             | 00:05:06 | 00:04:10           | 00:05:24  | 00:06:15             | 00:05:06        | 00:05:24 | 00:07:34         | Bosa                     | Engatava                 |
| G22 Portal Sur     | Portal 80          | 00:04:00   | 00:04:06              | 00:05:20  | 00:06:00             | 00:05:25 | 00:04:09           | 00:05:48  | 00:06:00             | 00:05:25        | 00:05:48 | 00:07:44         | Engatava                 | Bosa                     |
| F60 P. Américas    | Calle 76           | 00:07:30   | 00:07:16              | 00:06:30  | 00:05:20             | 00:03:41 | 00:03:15           | 00:03:59  | 00:05:20             | 00:03:41        | 00:03:59 | 00:05:11         | Chapinero-Barrios Unidos | Kennedy                  |
| A60 Calle 76       | Portal Américas    | 00:03:34   | 00:03:30              | 00:04:46  | 00:04:55             | 00:04:28 | 00:04:34           | 00:05:53  | 00:04:55             | 00:04:28        | 00:05:53 | 00:07:00         | Kennedy                  | Chapinero-Barrios Unidos |
| G30 Portal Sur     | Portal Suba        | 00:03:45   | 00:03:45              | 00:04:16  | 00:06:24             | 00:05:51 | 00:04:10           | 00:05:56  | 00:06:24             | 00:05:51        | 00:05:56 |                  | Suba                     | Bosa                     |
| C30 Portal Suba    | Portal Sur         | 00:06:00   | 00:05:08              | 00:06:10  | 00:06:54             | 00:06:30 | 00:04:33           | 00:05:56  | 00:06:54             | 00:06:30        | 00:05:56 |                  | Bosa                     | Suba                     |
| F26 P. Américas    | Alcalá             |            |                       |           | 00:07:15             | 00:07:15 | 00:03:55           | 00:06:07  | 00:07:15             | 00:07:15        | 00:06:07 |                  | Usaquen-Suba             | Kennedy                  |
| B26 Alcalá         | Portal Américas    | 00:04:45   | 00:04:04              | 00:06:32  | 00:06:00             |          |                    |           | 00:06:00             |                 |          |                  | Kennedy                  | Usaquen-Suba             |
| B46 Portal Norte   | San Mateo          | 00:03:39   | 00:03:30              | 00:04:06  | 00:07:11             | 00:08:00 | 00:08:00           | 00:07:40  | 00:07:11             | 00:08:00        | 00:07:40 |                  | Soacha                   | Usaquen-Suba             |
| G46 San Mateo      | Portal Norte       | 00:04:30   | 00:06:00              | 00:06:44  | 00:04:39             | 00:04:20 | 00:04:00           | 00:04:24  | 00:04:39             | 00:04:20        | 00:04:24 |                  | Usaquen-Suba             | Soacha                   |
| B23 Alcalá         | Portal Eldorado    | 00:05:00   | 00:04:14              | 00:04:33  | 00:05:20             | 00:04:32 | 00:04:00           | 00:06:27  | 00:05:20             | 00:04:32        | 00:06:27 | 00:08:00         | Engatava-Fontibon        | Usaquen-Suba             |
| K23 P. Eldorado    | Alcalá             | 00:05:30   | 00:04:35              | 00:04:35  | 00:05:25             | 00:05:06 | 00:04:20           | 00:06:38  | 00:05:25             | 00:05:06        | 00:06:38 | 00:09:37         | Usaquen-Suba             | Engatava-Fontibon        |
| H21 Portal Tunal   | Portal 80          | 00:05:15   | 00:04:46              | 00:05:38  | 00:06:14             | 00:05:01 | 00:04:05           | 00:06:06  | 00:06:14             | 00:05:01        | 00:06:06 | 00:06:47         | Engatava                 | Tunjuquito               |
| D21 Portal 80      | Portal Tunal       | 00:06:00   | 00:04:22              | 00:05:34  | 00:05:45             | 00:05:19 | 00:05:00           | 00:06:12  | 00:05:45             | 00:05:19        | 00:06:12 | 00:06:58         | Tunjuquito               | Engatava                 |
| 1 Universidades    | Portal Eldorado    | 00:05:00   | 00:05:00              | 00:05:00  | 00:05:59             | 00:05:33 | 00:05:00           | 00:05:25  | 00:05:59             | 00:05:33        | 00:05:25 | 00:08:00         | Engatava-Fontibon        | Santa Fe                 |
| 1 P. Eldorado      | Universidades      | 00:06:00   | 00:05:16              | 00:05:00  | 00:05:59             | 00:05:33 | 00:05:00           | 00:05:25  | 00:05:59             | 00:05:33        | 00:05:25 | 00:06:51         | Santa Fe                 | Engatava-Fontibon        |
| J76 Universidades  | Portal Usme        | 00:06:00   | 00:06:10              | 00:07:51  |                      |          |                    |           |                      |                 |          |                  | Usme                     | Santa Fe                 |
| H76 Portal Usme    | Universidades      |            |                       |           |                      |          |                    |           |                      |                 |          |                  | Santa Fe                 | Usme                     |
| A61 Polo           | Portal Américas    | 00:04:00   | 00:02:43              | 00:03:50  | 00:04:00             | 00:03:32 | 00:02:45           | 00:04:03  | 00:04:00             | 00:03:32        | 00:04:03 | 00:08:39         | Kennedy                  | Barrios Unidos           |
| F61 P. Américas    | Polo               |            |                       |           | 00:05:00             | 00:03:30 | 00:03:01           | 00:05:57  | 00:05:00             | 00:03:30        | 00:05:57 |                  | Barrios Unidos           | Kennedy                  |
| G42 San Mateo      | 7 de Agosto        | 00:05:00   | 00:06:53              | 00:06:46  | 00:05:13             | 00:06:12 | 00:06:00           | 00:05:59  | 00:05:13             | 00:06:12        | 00:05:59 | 00:05:24         | Barrios Unidos           | Soacha                   |
| E42 7 de Agosto    | San Mateo          | 00:03:21   | 00:03:15              | 00:04:15  | 00:05:37             | 00:06:12 | 00:06:00           | 00:05:59  | 00:05:37             | 00:06:12        | 00:05:59 | 00:06:37         | Soacha                   | Barrios Unidos           |
| 5 Av. Jiménez      | Portal Américas    | 00:05:00   | 00:05:29              | 00:05:30  | 00:05:38             | 00:04:50 | 00:04:16           | 00:05:05  | 00:05:38             | 00:04:50        | 00:05:05 | 00:05:04         | Kennedy                  | Santa Fe-Los Martires    |
| 5 P. Américas      | Av. Jiménez        | 00:06:00   | 00:06:00              | 00:05:31  | 00:05:39             | 00:04:54 | 00:03:37           | 00:04:40  | 00:05:39             | 00:04:54        | 00:04:40 | 00:05:14         | Santa Fe-Los Martires    | Kennedy                  |
| B75 P. Norte       | Portal Usme        | 00:03:15   | 00:03:34              | 00:04:57  | 00:05:30             | 00:04:30 | 00:04:43           | 00:06:19  | 00:05:30             | 00:04:30        | 00:06:19 | 00:07:07         | Usme                     | Usaquen-Suba             |
| H75 P. Usme        | Portal Norte       | 00:09:30   | 00:03:51              | 00:03:57  | 00:05:25             | 00:04:30 | 00:04:30           | 00:05:39  | 00:05:25             | 00:04:30        | 00:05:39 | 00:06:24         | Usaquen-Suba             | Usme                     |
| 6 Portal 80        | Universidades      | 00:07:00   | 00:07:00              | 00:06:08  | 00:05:30             | 00:05:30 | 00:05:33           | 00:05:58  | 00:05:30             | 00:05:30        | 00:05:58 | 00:06:02         | Santa Fe                 | Engatava                 |
| 6 Universidades    | Portal 80          | 00:06:00   | 00:04:53              | 00:05:07  | 00:06:00             | 00:06:00 | 00:06:00           | 00:06:06  | 00:06:00             | 00:06:00        | 00:06:06 | 00:06:06         | Engatava                 | Santa Fe                 |
| J70 Aguas          | Portal Norte       |            | 00:03:45              | 00:04:03  | 00:04:45             |          |                    |           | 00:04:45             |                 |          |                  | Usaquen-Suba             | Santa Fe                 |
| F32 P. Américas    | NQS - Calle 75     | 00:03:00   | 00:03:54              | 00:06:00  | 00:05:55             | 00:03:21 | 00:03:00           | 00:04:39  | 00:05:55             | 00:03:21        | 00:04:39 | 00:05:47         | Barrios Unidos           | Kennedy                  |
| E32 NQS - Cl. 75   | Portal Américas    | 00:06:00   | 00:03:38              | 00:05:01  | 00:06:00             | 00:06:00 | 00:06:00           | 00:07:37  | 00:06:00             | 00:06:00        | 00:07:37 |                  | Kennedy                  | Barrios Unidos           |
| 4 Héroes           | Portal Sur         | 00:06:15   | 00:06:01              | 00:05:41  | 00:05:55             | 00:06:00 | 00:05:54           | 00:05:44  | 00:05:55             | 00:06:00        | 00:05:44 | 00:05:56         | Bosa                     | Chapinero-Barrios Unidos |
| 4 Portal Sur       | Héroes             | 00:06:00   | 00:06:00              | 00:05:41  | 00:05:57             | 00:05:30 | 00:05:30           | 00:05:13  | 00:05:57             | 00:05:30        | 00:05:13 | 00:06:15         | Chapinero-Barrios Unidos | Bosa                     |
| B18 Terminal       | Portal 20 de Julio | 00:05:11   | 00:04:09              | 00:04:53  | 00:06:29             | 00:05:58 | 00:05:04           | 00:06:13  | 00:06:29             | 00:05:58        | 00:06:13 | 00:07:51         | San Cristobal            | Usaquen-Suba             |
| L18 P. 20 de Julio | Terminal           | 00:06:15   | 00:05:55              | 00:06:01  | 00:06:29             | 00:04:36 | 00:04:00           | 00:05:24  | 00:06:29             | 00:04:36        | 00:05:24 | 00:08:55         | Usaquen-Suba             | San Cristobal            |
| J73 Universidades  | Portal Suba        |            | 00:05:47              | 00:06:47  | 00:06:00             |          |                    |           | 00:06:00             |                 |          |                  | Suba                     | Santa Fe                 |
| C73 P. Suba        | Universidades      |            |                       |           |                      | 00:05:30 | 00:05:20           | 00:09:10  |                      | 00:05:30        | 00:09:10 | 00:12:18         | Santa Fe                 | Suba                     |
| M83 Museo Nacional | Portal Usme        | 00:03:23   | 00:03:04              | 00:04:30  | 00:05:24             | 00:05:18 | 00:05:05           | 00:05:44  | 00:05:24             | 00:05:18        | 00:05:44 | 00:06:00         | Usme                     | Santa Fe                 |

| Nombre Ruta                | Parada Inicio               | Franja               |                       |                      |                      |          |                    |           |                      |                            | Localidad Origen           | Localidad Destino |
|----------------------------|-----------------------------|----------------------|-----------------------|----------------------|----------------------|----------|--------------------|-----------|----------------------|----------------------------|----------------------------|-------------------|
|                            |                             | 1 Nocturno           | 2 Transición Nocturno | 3 Pico AM            | 4 Transición Pico AM | 5 Valle  | 6 Transición Valle | 7 Pico PM | 8 Transición Pico PM | 9 Pre- Nocturno            |                            |                   |
| H83 Portal Usme<br>E48 CAD | Museo Nacional<br>San Mateo | 00:05:00<br>00:05:07 | 00:04:27<br>00:04:09  | 00:05:00<br>00:06:12 | 00:05:30<br>00:08:00 | 00:04:10 | 00:03:15           | 00:05:06  | 00:06:05             | Santa Fe                   | Usme                       |                   |
| G48 San Mateo              | CAD                         |                      |                       |                      |                      |          |                    |           |                      | Los Martires-Puente Aranda | Soacha                     |                   |
| MC84                       | Av Suba - K114D             | 00:05:00             | 00:04:27              | 00:05:00             | 00:05:56             | 00:05:00 | 00:04:13           | 00:05:43  | 00:07:06             | Soacha                     | Los Martires-Puente Aranda |                   |
| MK86                       | Portal Eldorado             | 00:05:00             | 00:04:53              | 00:06:00             | 00:06:00             | 00:03:53 | 00:04:26           | 00:05:28  | 00:09:51             | Suba                       | Chapinero                  |                   |
| ML82                       | Portal 20 de Julio          | 00:03:45             | 00:03:40              | 00:03:54             | 00:03:53             | 00:02:57 | 00:03:45           | 00:05:05  | 00:07:54             | Engatva-Fontibon           | Usaquen                    |                   |
| D81                        | Portal 20 de Julio          | 00:03:07             | 00:03:21              | 00:04:03             | 00:04:43             | 00:04:30 | 00:04:30           | 00:05:02  | 00:08:28             | San Cristobal              | Usaquen                    |                   |
| L81                        | AC80 - K119                 | 00:03:56             | 00:03:11              | 00:03:26             | 00:04:44             | 00:04:47 | 00:04:18           | 00:04:44  | 00:09:09             | San Cristobal              | Engatva                    |                   |
| P85-M85                    | Museo Nacional              | 00:07:00             | 00:07:00              | 00:07:00             | 00:07:00             | 00:07:00 | 00:07:00           | 00:07:03  | 00:08:42             | Engatva                    | San Cristobal              |                   |
|                            |                             |                      |                       |                      |                      |          |                    |           |                      | Santa Fe                   | Punte Aranda-Kennedy       |                   |